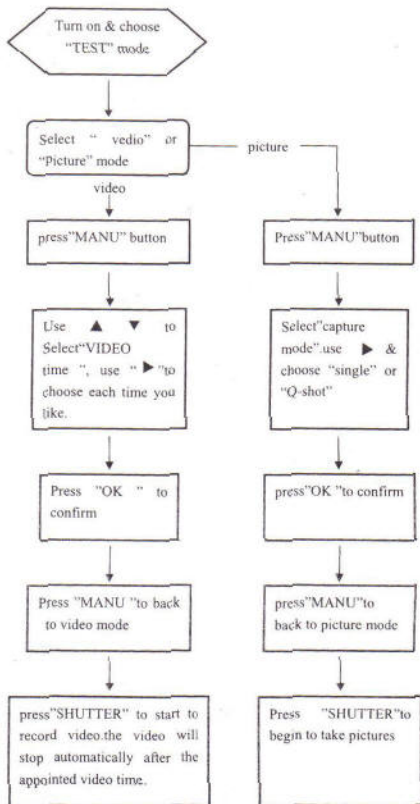


Mandy-Cam

Manual operation



- * Read this Instruction Manual carefully before you start using this digital trail camera.
- * Before taking important videos please take a test capture to confirm whether the recorder is working correctly.
- * Keep this manual for reference.

TRADEMARK INFORMATION

- Microsoft® and Windows® are U.S. registered trademarks of Microsoft Corporation.
- Pentium® is a registered trademark of Intel Corporation.
- SD™ is a trademark
- Other names and products may be trademarks or registered trademarks of their respective owners.

Thanks for choosing brand-new infrared digital trail camera. You can enjoy the benefits of this fully-feature product. The 3MP/5MP/8MP series infrared digital trail camera features the latest scouting camera technology and captures clear digital images 24-hour using No Flash. No film. No noise. No complicated programming. It's a user-friendly camera.

CONTENTS

1. DK30 START AND SETTING	2
2. DK30 SET DATE & TIME & DELAY	4
3. DK30 PLAYBACK & DOWNLOAD	5
4. DK30 SPECIFICATIONS	6
5. DK50/DK80 START & SETTING	7
6. DK50/DK80 CAMERA SETUP & MENU	8
7. DK50/DK80 PLAYBACK & DELETE	10
8. DK50/DK80 DOWNLOAD TO A COMPUTER	11
9. DK50/DK80 SPECIFICATION	12
10. TROUBLE SHOOTING	13

Dk30 3.0 Mega Pixels Camera

Main features of the Digital Trail Camera

1. Mode LCD displays date, time, picture number, delay time, and battery status
2. Motion triggered and adjustable PIR sensitivity
3. Auto-distinguish images. Color Images in daytime / Black & White Night Images
4. Stores pictures in SD/MMC card
5. Multi-shot of 1 / 3 pictures
6. Video default is 30 seconds
7. Programmable from 10 seconds to 990 seconds delay time between triggers
8. "No Flash" Uses 54 Infrared LEDs to illuminate the coverage area
9. Water proof housing case
10. Date and time stamp on each picture
11. Power jack for external DC12V input

BATTERIES

The Camera VSE rechargeable lithium-ion battery. You can open the cover on top of the case and load the battery according to the connector's position inside of the case. The LCD panel displays three (3) battery states which tell you how much power remains in battery. The camera will continue to take pictures when the batteries are half full, but you should charge the battery when the icon says they are empty.



remain no



remain Half



remain Full

CHARGE THE BATTERY

When the screen displays a empty battery icon, you should change up the battery.

Two ways to charge up the camera:

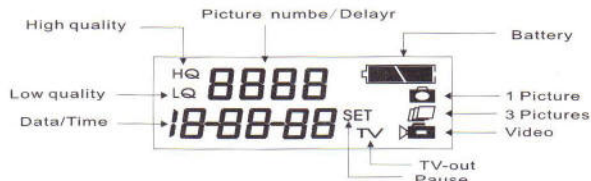
1. Plug the charger to the camera and charge it directly. Insert your charger plug into camera jack in the bottom of camera. Plug the AC adaptor into a wall outlet. When you use this method to charge, the indicator light on the camera should be red when you charge, and will be off when finish.

2. Take out the battery from the camera, and plug the charger to the battery to recharge it. You can take out the battery from case. Insert charger plug into battery jack on the side of battery. Plug the AC adaptor into a wall outlet. The status LED on top of battery will glow red, turning green when the battery is fully charge. You can also charge the battery by keeping it in the camera



THE SD SLOT accepts optional "SD" or "MMC" memory cards. **Important!** Remember, when inserting or removing a SD/MMC card, make sure the "ON/SET/OFF" is set to "OFF". Otherwise you may lose your pictures or damage the card. Remove the label on the card to Un-lock position. Slide the card in gently, without force. When the memory card is full, there will display "FULL" on LCD.

LCD SCREEN



THE USB PORT is for connecting to a computer. You can copy pictures from your camera to a computer using the supplied **USB cable**. There will be **DISK** display on LCD. Your computer sees the camera as a removable disk driver.



THE TV OUT port uses the supplied A/V cable to show camera pictures or video through the video input on your television.



POWER SWITCH

When you select "SET", you can **SET DATE, TIME and DELAY**. Set the power switch to **SET**, the LCD panel displays battery modes and date at once, after 3 seconds it displays number of pictures and "HQ" icon with the

red light blinking. When you select "ON" the camera start to work on self-motion mode.



In "SET" mode, press MENU once the default setting HQ icon will flash, use "DOWN" the icon will change to LQ or press MENU jump into next setting. Keep using MENU button until date, time and delay has been set, press OK to confirm. The default of **DELAY** is "10 S". You can choose the length of pause time from 10 seconds to 990 seconds, the camera will wait (as your setting seconds) after it takes a picture until it can take next one. It's useful to prevent taking too many pictures of the same animal if it stays in front of the camera.

The camera will not take any pictures during the "SET", you may change the mode switch from "SET" to "ON", then set " " " " " or " " " at any time.



THE DISTANCE DIAL adjusts the sensitivity of the motion detector. Slide the switch to the right to increase the distance.

The best way to check the effect of the distance setting is to turn the mode switch to the "SET". The "SET" light on the left of the LCD panel. You can walk around in front of the camera where you think animals will be moving. When the detector triggers your motion, the RED light will blink once. When you see how the camera reacts to your motion, you may want to adjust the "Distance" setting, or change the height and direction the camera is mounted.



IN TV mode allows you review pictures on television. You can only use it when power switch in SET mode, LCD screen show TV icon after you press this button. Connect supplied A/V cable to television, and plug into TV-out port on camera. You will see the latest picture taken in camera and other pictures. Use ? or ? shift to different pictures.

You can DELETE ONE picture, DELETE ALL pictures or FORMAT your SD card by pressing MENU , press OK to confirm your choice.



THE MODE SWITCH selects between " " , " " and " ". When you select " " or " " , camera can capture 3 mega pixels (HQ) still images or record videos at a resolution of 320 by 240 pixels. In Video mode, length default setting on 30 seconds.

In mode switch, you can set the " " switch for a single shot or set to " " position. " " mode allows the camera to take a second, third picture with 15 seconds between each capture. Sometimes there may be one or more animals behind the first one that triggers the motion detector.

DOWNLOAD TO A COMPUTER

To transfer pictures from your camera to your computer, you have a few choices.

One way is to take the **SD card** from the camera [with the power off] and plug it directly in to the SD slot on some computers. You can buy a small **SD card** reader that plug into a **USB port** on your computer.

You can also connect the Camera to your computer by the supplied **USB cable**. First make sure your computer is on and running. Connect the USB cable from the camera to the computer. The computer recognizes the camera as a removable disk. You can see the images in a folder with the name like "DCIM"---"100MEDIA".

You can view, edit or delete pictures with your own programs, or the binding software with your Trail Camera. Some computers let you store pictures on CD-R.

TIP When mounting the camera, check to see that it is level and aimed correctly. The best focus & flash "target zone" should be about 15 to 20 feet in front of the camera.

TIP Generally, daytime pictures look better when the camera is pointed north, away from the sun. The rising or setting sun can trigger the camera when no animals are present.

Specifications

- Image Sensor: CMOS sensor 2 Mega Pixels
- Still Image: 2048*1536 (3MP) ;1600*1200(2MP)
- Video resolution: 320*240
- File format: JPG/AVI
- Display: Four-digital mode LCD
- External memory: SD/MMC card up to 2 GB
- Internal memory: 16MB of built-in memory
- Exposure: Auto
- Low battery: Auto indicator(yellow light)
- Card full display: Auto
- Playback mode: Television or computer play;
- TV-out: NTSC or PAL
- PIR distance: Adjustable
- OS: WINDOWS®98/98SE/ME/2000/XP
- Power supply: Rechargeable lithium-ion battery or 12V DC input
- Operating Temperature: -4 3/4 F to 122 3/4 degrees F
- Storage Temperature: -22 3/4 F to 167 3/4 degrees F


Kit Contains:

- Digital camera with all weather housing
- Rechargeable Lithium battery
- AC 110-240V Charger
- USB cable
- A/V cable
- Manual
- Strap
- CD

DK50/DK80 5.0/8.0 Mega Pixels Camera**Main features of the Digital Trail Camera**

- 1.2 inch TFT LCD displays capture mode, memory space and battery status
- 2.Motion triggered and adjustable PIR sensitivity
- 3.Auto-distinguish images. Color Images in daytime / black & white night Images
- 4.Stores pictures in SD/MMC card
- 5.Multi-shot of 1 / 3 pictures
- 6.Video length can choose from 15 to 120 seconds.
- 7.Programmable from 30sec to 2 hours delay length between triggers.
- 8."No Flash" Uses 40 Infrared Emitters to illuminate the coverage area
- 9.Water proof housing case
- 10.Date and time stamp on each picture
- 11.Power jack for external DC12V input/charge battery.

BATTERIES

 The camera requires rechargeable lithium-ion battery. You can open the cover on top of the case and load the battery according to the connector's position inside of the case.

The LCD panel displays three (3) battery modes which tells you how much power remains in battery. The camera will continue to take pictures when the batteries are half full, but you should charge the battery when the icon says they are empty.



remain no



remain Half



remain Full

CHARGE THE BATTERY

When the screen displays a empty battery icon. You should change up the battery.

Two ways to charge up the camera:

- 1.Plug the charger to the camera and charge it directly. Insert your charger plug into camera jack in the bottom of camera. Plug the AC adaptor into a wall outlet. When you use this method to charge, the indicator light on the camera should be red when you charge, and will be off when finish.
2. Take out the battery from the camera, and plug the charger to the battery to recharge it. You can take out the battery from case. Insert charger plug into battery jack on the side of battery. Plug the AC adaptor into a wall outlet. The status LED on top of battery will grow red, turning green when the battery is fully charge. You can also charge the battery by keeping it in the camera



THE SD SLOT accepts optional "SD" or "MMC" memory cards. Important! Remember, when inserting or remove a SD/MMC card, make sure the "ON/TEST/OFF" is set to "OFF". Otherwise you may lose your pictures or damage the card. Align the card with the label up and the card is in Un-lock position. Slide the card in gently, without force. If it doesn't go in easily, recheck the alignment. When the memory card is full, there will be "FULL" displays on LCD.



THE USB PORT is for connecting to computer. You can download pictures from your camera to a computer using the supplied USB cable. Your computer sees the camera as a **MSDC**. When you connect your camera to computer, there will be **MSDC**. You can download or copy pictures from file "DCIM"-"100MEDIA".



THE TV OUT port uses the supplied A/V cable to display preview mode on your television, you can go to playback mode by pressing "OK" and enjoy the pictures or videos on TV. Before you connect the camera to television you should make sure the camera is in the same mode with your television. Change the selection in "MENU"-"TV out".

■SET DATE / TIME

- 1-In TESE mode, press MENU once.
- 2-Use ▲ or ▼ choose the option, use ► go into and setup.
- 3-Press OK until date and time has been changed.

■DISTANCE SETUP

The best way to check on deflection distance setting is set mode switch to the "TEST". The "TEST" light on the LED window will flash when you walk around in front of the camera where you think animals will be

TIP

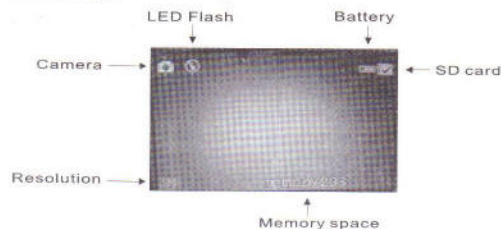
When you are using "MAC" computer you should select "SIDC" mode in playback menu.

moving. When the detector triggers your Motion the **RED** light will blink once. When you see how the camera reacts to your motion, you may want to adjust the "Distance" setting, or change the height direction the camera is mounted.

■ CHOOSE CAPTURE MODE

- 1-In control panel, you can choose or by shift the switch. This mode switch selects between PICTURE and VIDEO.
- 2-When you choose , you can also set single shot or 3 shots in the menu of **Capture Mode**.

LCD SCREEN



Menu: menu mode

OK: confirm and playback mode

▲: upper

▼: lower

◀: cancel or higher menu

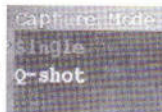
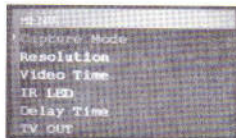
▶: confirm or lower menu

① Capture Mode

- a. Picture [single, default in capitals]
- b. Q-shot[3 pictures with one detection]

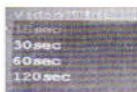
② Resolution

- | | | | |
|--------------|-------|--------------|-------|
| 5Mega Pixels | | 8Mega Pixels | |
| a. 2592*1944 | [5MP] | a. 3504*2336 | [8MP] |
| b. 2048*1536 | [3MP] | b. 2592*1944 | [5MP] |
| c. 1600*1200 | [2MP] | c. 2048*1536 | [3MP] |



③ Video Time

- a. 15sec
- b. 30sec
- c. 60sec
- d. 120ecs



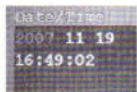
④ Delay Time

From 30 seconds to 1H: 59M: 59S.



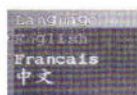
⑤ Date/time

- a. Date: 2007 / 11 / 23
- b. Time: 15:59:59



⑥ Language

- a. English
- b. French
- c. 中文



■ PLAYBACK

The LCD viewing screen can show you a live preview images and you can use it to playback picturesor videos recorded in the SD card.

- 1-Keep camera on **TEST** mode.
- 2-Press OK button to **PLAYBACK** mode, press ◀ or ▶ selects a picture.
- 3-Press OK to start review shift ◀ you can go back to preview mode.

Erase

- 1-Keep camera on **TEST** mode.
- 2-Press OK button to **PLAYBACK** mode, press menu button.
- 3-Use ▲ or ▼ you can delete one /all pictures.
- 4-Press "OK"to confirm or ◀ to exit.



To transfer pictures from your camera to your computer, you have a few choices. One way is to take the **SD card** from the camera [with the power off] and plug it directly in to the SD slot on some computers. You can buy a small **SD card** reader that plug into a **USB port** on your computer. You can also connect the Camera to your computer by the supplied **USB cable**. First make sure your computer is on and running. Set mode switch to test/off, connect the USB cable from the camera to the computer. The computer recognizes the camera as a removable disk. You can see the images in a folder with the name like "DCIM"---"100MEDIA" You can view, edit or delete pictures with your own programs, or with the software supplied with your Game Camera. Some computers let you store pictures on CD-R.

Specifications

- Image Sensor: CMOS sensor 3/5 Mega Pixels
- Still Image: 1600*1200(2MP);2048*1536(3MP);2560*1920(5MP);3504*2336(8MP)
- Video resolution: 320*240
- File format: JPG/AVI
- Display: 2" TFT-LCD
- External memory: SD/MMC card up to 2GB
- Internal memory: 16MB of built-in memory
- Exposure: Auto
- Low battery: Auto indicator
- Card full display: Auto
- Playback mode: LCD,TV and computer
- TV-out: NTSC/PAL
- PIR distance: Adjustable
- OS: WINDOWS®98/98SE/ME/2000/XP
- Power supply: Rechargeable lithium-ion battery or 12V DC input
- Operating Temperature: -4 3/4 F to 122 3/4 degrees F
- Storage Temperature: -22 3/4 F to 167 3/4 degrees F

Kit Contains:

- Digital camera with all weather housing
- Rechargeable Lithium battery
- AC 110-240V Charger
- USB cable
- A/V cable
- Manual
- Strap
- CD

NO ANIMAL IN SOME PICTURES

1. Check to see if the camera is pointing at the rising or setting sun which can trigger the sensor.
2. At night, the Motion Detector may sense animals beyond the range of the IR illumination. Reduce the Distance setting.
3. Small animals may be triggering the unit. Reduce the Distance setting and/or raise the height of the camera above small animals.
4. The Motion Detector may sense animals through foliage. Reduce the Distance setting.
5. If the animal moves quickly, it may have moved out of the view of the camera lens before the picture was taken.
 - a. Move the camera further back.
 - b. Point the camera up or down a trail, not across it.
6. Make sure the mounting post or tree is stable and doesn't move.

SWITCH ON DOSE NOT RESPOND

If you have just turned the main power switch on, wait a few seconds until the icons disappear on the LCD.

RED LIGHT ON FRONT OF CAMERA STAYS ON

Check to see if the main mode switch is in the Test mode.

DAYLIGHT PICTURES ARE TOO WHITE

Camera may be pointed at the sun; point away from sun.

DAY PICTURES, BUT NO NIGHT PICTURES

Camera batteries may be too weak.

MOUNTING THE CAMERA

When you are ready to set up your camera in the field, you have several options. There is a supplied strap let you attach your Camera onto a tree. Owners have found many ways to mount their cameras for their own applications.